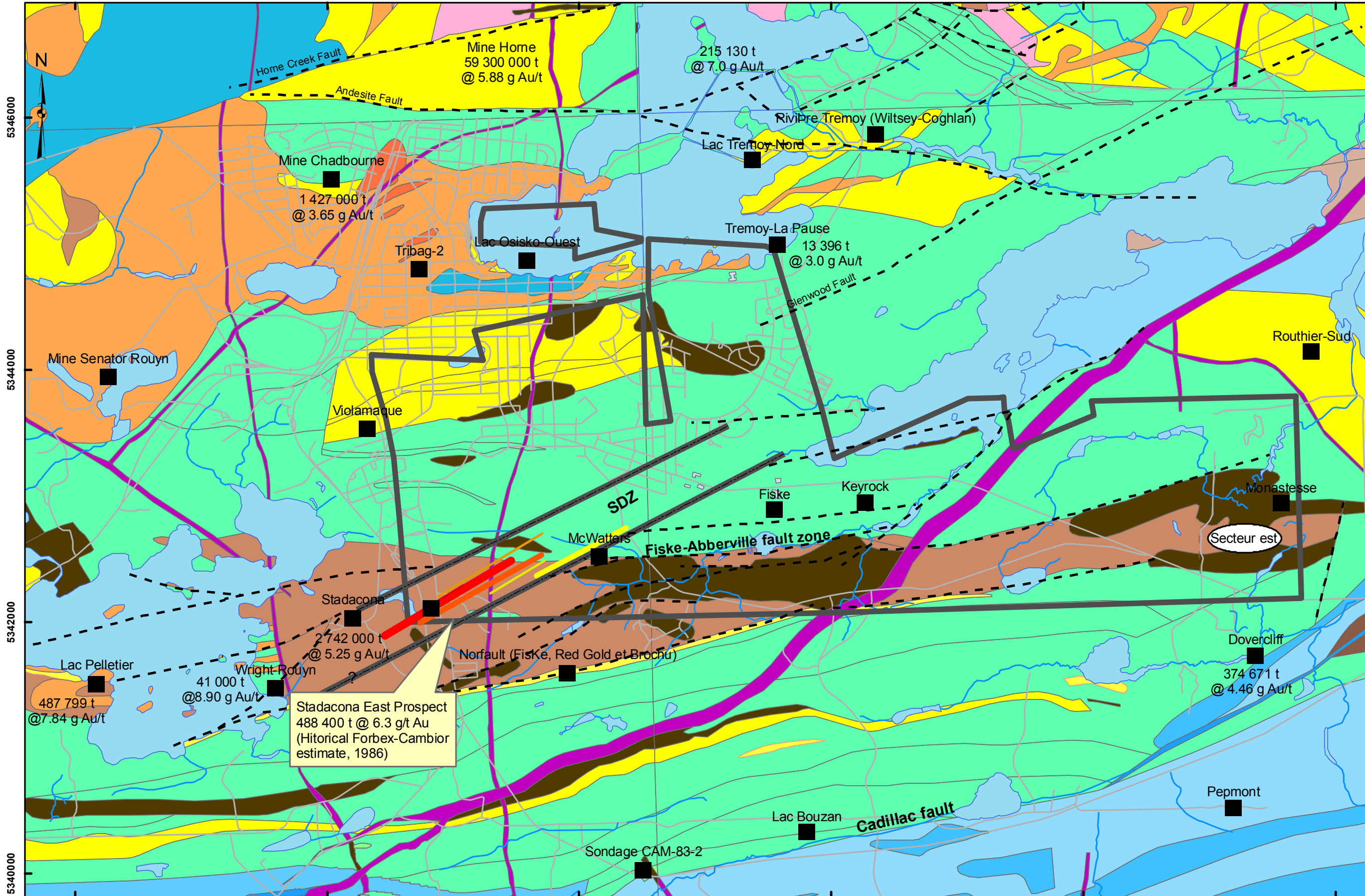


644000 646000 648000 650000 652000 654000



- Legend**
- Mines and prospects
 - - - Shear, fault zone
 - Stadacona zones
 - ▬ Stadacona deformation zone (SDZ)
 - ▬ Zone Stadacona East
 - ▬ Zone 98
 - ▬ Zone Red Gold
 - ▬ Zone Nord A
 - ▬ Zone Nord B
 - ▬ Zone Sud A
 - Lithology
 - ▬ Rhyolite
 - ▬ Rhyodacite
 - ▬ Dacite
 - ▬ Intermediate volcanics
 - ▬ Mafic volcanics
 - ▬ ultramafic volcanite
 - ▬ Granite
 - ▬ Granodiorite
 - ▬ Diorite
 - ▬ Gabbro
 - ▬ Diabase
 - ▬ Felsic intrusion porphyric
 - ▬ Pyroclastics
 - ▬ Felsic pyroclastics
 - ▬ Intermediate pyroclastics
 - ▬ Mafic pyroclastite
 - ▬ Tonalite
 - ▬ Felsic intrusive
 - ▬ Syenite
 - ▬ Mafic intrusive
 - ▬ Schist
 - ▬ Biotite schiste
 - ▬ Arkose
 - ▬ Mudrock
 - ▬ Trondhjemite
 - ▬ Sandstone
 - ▬ Wacke
 - ▬ Conglomerate
 - ▬ Sediments

0 500 1,000 2,000 Meters

**STADACONA EAST PROPERTY
GEOLOGY OF THE STADACONA EAST
PROSPECT AND ADJACENT AREA**

Figure 6

